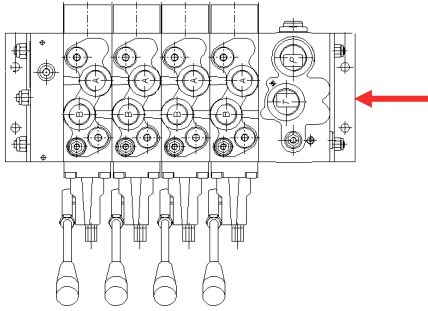


The composition form is the only printed form that guarantees a Brevini Hydraulics product may be correctly defined and ordered without the possibility of error. Given the many possible product combinations, the new form has two formats with two different spreadsheets:

- 1) form for directional valves with standard inlet section (right or left HSE) – the "Single Inlet and combined" spreadsheet;
- 2) form for directional valves with intermediate inlet section (HFLS), two inlet sections and intermediate closure section (HPFS) – the "Double Inlet" spreadsheet.

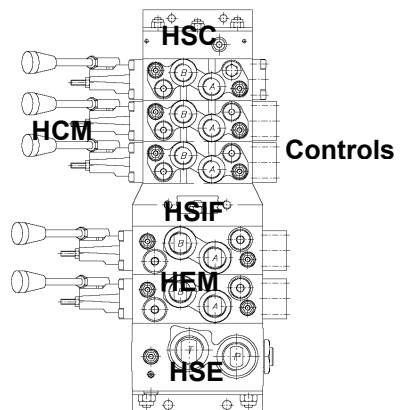
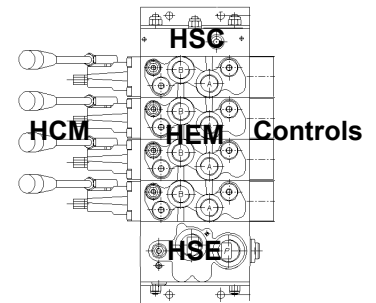
1) Composition form for directional valves with standard inlet section or combined



Based on the selection made in the drop down menu in the lower part of the form (see illustration below) unit n.1 may have a configuration with right inlet (standard configuration, where the inlet section remains on the right when the levers for the HCM manual control are engaged towards the observer).

This is an important modification as previously the inlet section was always indicated at the top of the form.

Funzione comandata Controlled function	Utilizzo B Port	0	12	14	Utilizzo A Port	Funzione comandata Controlled function
			HSC			
18		bar				
18		L9a				
18		L9b				
18	9	bar				
18		L9a				
18		L9b				
18	8	bar				
18		L8a				
18		L8b				
18	7	bar				
18		L7a				
18		L7b				
18	6	bar				
18		L6a				
18		L6b				
18	HCM	bar				
18		L5a				
18		L5b				
18		bar				
18		L4a				
18		L4b				
18		bar				
18		L3a				
18		L3b				
18		bar				
18		L2a				
18		L2b				
18		bar				
18		L1a				
18		L1b				
18		bar				
			HSE			



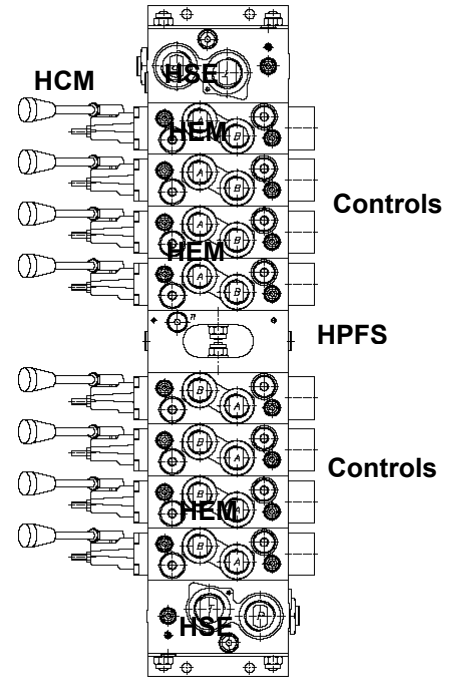
Field for Notes

Alimentaz. HPV a D/I (Standard) / (Std.) Right HPV feed

Nominativo Cliente - Customer :	Es : Comacchio		
Descrizione articolo - Item description :	Es : HPV41/8		
Data di compilazione modulo - Compilation form date :			
N. codice interno distributore - our valve internal code :	Es : HPV4100032		
Numero di serie del distributore - Serial number valve :	Es : 245485		
Codice del cliente, presso il cliente - customer reference code :	Es : 3 - 3066 013		
Indice di modifica modulo - compilation form modification index :	A del 00/00/00		
N°Ordine - Order No. :		N° conferma - Order ack. N°:	
Data dell'ordine - Order Date :		Quantità ordine - Order quantity :	
Quotazione n° - Quotation number :		Prezzo netto EURO - Net price EUR :	
Data consegna - Delivery date :		Prezzo list 2008 n°BH005/1 :	

2) Form for directional valves with intermediate inlet section (HFLS) or two inlet sections and intermediate closure section (HPFS)

77+41	Utilizzo A Port	P 12 bar	HSE	13 14 15	Utilizzo B Port	Funzione comandata Controlled function
18	1	L5a	HEM	18	Controle	20
18		L5b		19		18
18		bar		16		19
18		L5a		17		20
18		L5b		17		21
18		L5b		17		21
18	2	L5a	HEM	18	Controle	19
18		L5b		19		19
18		bar		18		20
18		L5a		17		21
18		L5b		17		21
18	3	L5a	HEM	18	Controle	20
18		L5b		19		19
18		bar		16		20
18		L5a		17		21
18	4	L5a	HEM	18	Controle	18
18		L5b		19		19
18		L5b		17		21
18	5	L5a	HEM	18	Controle	20
18		L5b		19		18
18		L5b		17		21
HPFS	Utilizzo B Port	11	HPFS	16 17 18 19	Utilizzo A Port	HPFS
18	5	L5a	HEM	18	Controle	20
18		L5b		19		19
18		bar		18		20
18		L5a		17		21
18		L5b		17		21
18	4	L5a	HEM	18	Controle	18
18		L5b		19		19
18		bar		16		20
18		L5a		17		21
18	3	L5a	HEM	18	Controle	18
18		L5b		19		19
18		L5b		17		21
18	2	L5a	HEM	18	Controle	20
18		L5b		19		18
18		L5b		17		21
18	1	L5a	HEM	18	Controle	20
18		L5b		19		18
18		L5b		17		21
		P 0 bar	HSE	0		
		P 12 bar		12		
Field for Notes						
<input type="checkbox"/> Allevata: HPV con HPFS / HPV feed with HPFS module						
Cliente - Customer: _____ Descrizione articolo - Item description: _____ Data di compilaz. modulo - Compilation form date: _____ Nr. codice interno distrib. - our valve internal code: _____ Numero di serie del distrib. - Serial number: _____ Codice del distrib. presso il cliente - customer reference code: _____ Indice di modifica modulo - compilation form modification index: _____						
N°Ordine - Order No.:		Quantità ordine - Order quantity:				
Data dell'ordine - Order Date:		Prezzo netto EURO - Net price EUR:				
Data consegna - Delivery date:		Riferimento listino n° - number price list:				
N° conferma - Order ack. N°:		Quotazione n° - Quotation number:				
<small>Questo modulo di composizione non è da considerarsi come una raccomandazione del Costruttore che declina ogni responsabilità al riguardo. This composition form shall not be deemed as a Manufacturer's recommendation. We decline any responsibility.</small>						

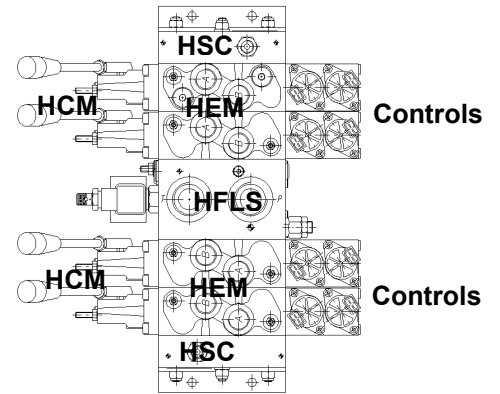


17461		Utilizzo B Port				Utilizzo A Port				Funzione consentita Controlled function	
18			12		13						
18			11	HSC	14						
18					15						
18		5	bar		16						
18			L5a		17				20		
18			L5b		18				18		
18		4	bar		19				21		
18			L5a		20				18		
18			L5b		21				18		
18		3	bar		22				21		
18	HCM		L5a	HEM	23				20		
18			L5b		24				18		
18		2	bar		25				21		
18			L5a		26				20		
18			L5b		27				18		
18		1	bar		28				21		
18			L5a		29				20		
18			L5b		30				18		
HFLS			0	HFLS	31				21		
18		1	bar		32				20		
18			L5a		33				18		
18			L5b		34				21		
18		2	bar		35				20		
18			L5a		36				18		
18			L5b		37				21		
18	HCM	3	bar		38				20		
18			L5a	HEM	39				18		
18			L5b		40				21		
18		4	bar		41				20		
18			L5a		42				18		
18			L5b		43				21		
18		5	bar		44				20		
18			L5a		45				18		
18			L5b		46				21		
			11	HSC	47						
			12		48						

Field for Notes	
Alimentaz. HFF con HFLS / HPI feed with HFLS module	

Cliente - Customer:	
Descrizione articolo - Item description:	
Data di compilaz. modulo - Compilation form date:	
N. codice interno distrib. - our valve internal code	
Numero di serie del distrib. - Serial number:	
Codice del distrib. presso il cliente - customer reference code	
Indice di modifica modulo - compilation form modification index	
N°Ordine - Order No.:	quantità ordine - Order quantity
Data dell'ordine - Order Date:	Prezzo netto EURO - Net price EUR
Data consegna - Delivery date:	Riferimento listino n° - number price list
N° conferma - Order ack. N°:	Quotazione n° - Quotation number:

Questo modulo di compilazione non è da considerarsi come una raccomandazione del Confindustria che declina ogni responsabilità al riguardo.
This compilation form shall not be deemed as a manufacturer's recommendation. We decline any responsibility.



To avoid mistakes when filling in the form, always refer to the relevant sections from 0 to 21 indicated in the unit selection tables at the end of the HPV41 and HPV77 catalogue.

You must indicate:

- a) the bar calibration for the main pressure relief valve (0 sector, HSE or HFLS inlet section, if any);

0	P	KIT0007703995	13	HSEA007701302
	270	HSE0007701204	14	
	bar		15	

- b) the HSE or HFLS inlet sections designed for the HSEV and/or HSER must always bear the code for the replacement cap, the relative valve or the discharge connection (section 13, see illustration above);
- c) directional valves with electro hydraulic controls must always be combined with inlet sections fitted with a pressure reducer (see catalogue);
- d) when required, enter the bar calibrations for the LS_{A/B} pressure relief valves (sectors 1 to 10, HEM distribution elements) – these pressure levels are always lower than the calibration value for the main relief valve; if the housing is to be capped on elements designed for Ls valves, enter code HESC0004103007 (HPV41) or HESC0007703007 (HPV77) in the calibration field;
The following default ratings will be set on the testing bench unless the calibration value is indicated for the main pressure relief valve (and there are no Ls valves on the elements):

HPV41 distr. Open centre: p = 200 bar

HPV41 distr. Closed centre: p = 250 bar

HPV77 distr. Open centre: p = 220 bar

HPV77 distr. Closed centre: p = 280 bar

If Ls valves are fitted on the elements and the calibration settings are not stated, they will be set at **20 bar less** than the setting for the main relief valve.

If the calibration is not indicated for the main relief valve but the calibration settings are indicated for the Ls valves on the elements, it will always be set about **20 bar higher** than the relief value for the Ls valves.

LUFF CYL	18	HCM000770C000	3	bar	HEM0007702345	16	HEAS007704305	MHPF007707056	20	
	19			LSa	80		17			19
				LSb	180					21

If Motion Control spools are fitted, it is essential to indicate the calibration of the LS valves on the elements; contact the customer if this is not indicated (the flow rate depends on the calibration);

- e) Check the code for the Caps or Antishock valves has been entered for relevant elements;
- f) Check that HSE, HEM, controls... have all GAS couplings or all SAE couplings;
- g) Check all the controls are either in cast iron or in aluminium;
- h) In the "*" field in sections from 1 to 10 (distribution elements - HEM), enter the code for the EU diaphragms kit for elements fitted with the units for electric discharge of LS_{A/B} MHFO, MHFR, MHFP, MHFK signals; elements designed for electrical discharge must always have EU diaphragms on spools and matching control block;

- i) Be careful when selecting the spools:
- the HEAS codes have standard discharges, HEASC codes have extended discharges, with the same flow rate at the applications;
 - If you require flow rate adjustment of the spool compared to the nominal setting (max 10% of nominal flow rate) indicate this limitation clearly in the right-hand column for the controlled function (pictures below);

16	HEAS004104055	MHPOD04108074	20	Limit flow on HEAS 50 l/min
17			19	
			21	

16	HEAS004104055	MHPF004108074	20	Limit flow on HEAS 50 l/min (A) 40 l/min (B)
17			19	
			21	

- If a spool is to be fitted with asymmetric flow rates, specify the applications for the flow rates;

16	HEAS007704159	MHPED07708008	20	Asymmetrical spool 100 l/min (A) – 180 l/min (B)
17			19	
			21	

- l) Use the right and left columns on the form properly, without entering any unnecessary information: the functions are usually indicated on the left: when a function is diversified for the applications, they may be indicated on the left and right (e.g. cylinder extension / cylinder return);
The right hand side is always used to enter flow rate limitations, asymmetrical spools ...

WINCH	18			bar	16	HEAS007704159	MHPED07708008	20	Asymmetrical spool 100 l/min (A) – 180 l/min (B)
	19		10	LSa	17			19	
				LSb				21	

Correct use of the space for the space for Notes at the bottom: include additional details

Field for Notes

- m) Control the code and Cup Nuts number have been entered correctly;
- n) Mounting customer feet: enter the Aron code and quantity;
- o) Indicate how to test MHFK in the Notes;
- p) Indicate pump flow rate (open centre) for the supply of the directional valve; If this flow is not indicated, proportional valve will be tested using a pump flow equal to sum of greater flows of at least two compensated working sections;
- q) Indicate whether there are any Diagrams in the Management Documents.

When composition form is completed, you have to select in price list spreadsheet "Single Inlet" or "Double inlet" in the menu up to right.