

AM.3.H...

AM.3.H... 2 AND 3 WAY HYDROSTATS CETOP 3



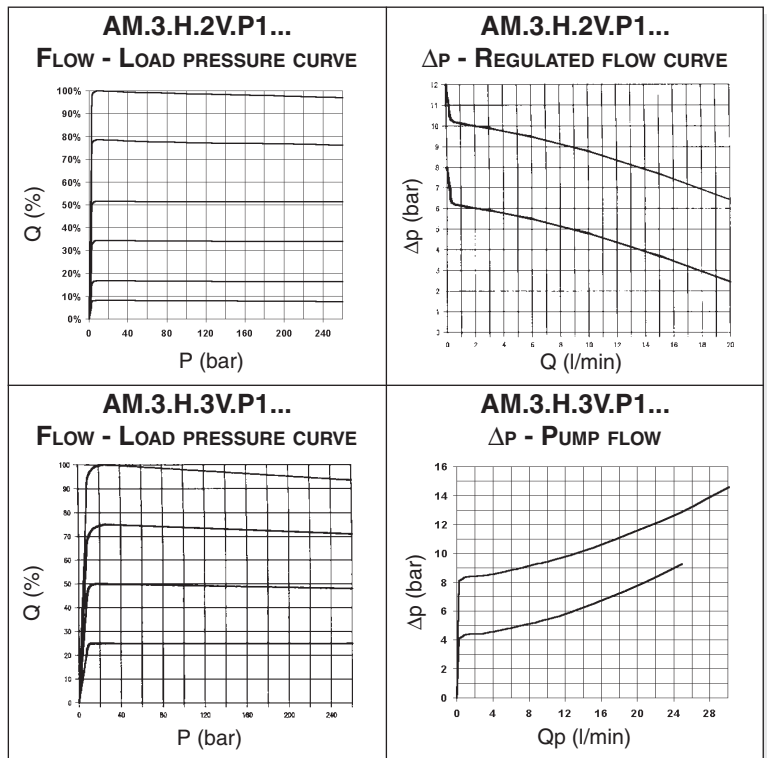
The 2 or 3 way pressure regulator type AM.3.H ensure the constant set flow rate in the presence of varying system load (pressure) by keeping constant the pressure drop ($\Delta p = 4/8 \text{ bar}$) in relation to the flow rate regulation.

In order to achieve the direction and flow rate dual control function, it is normally used together with a proportional solenoid valve

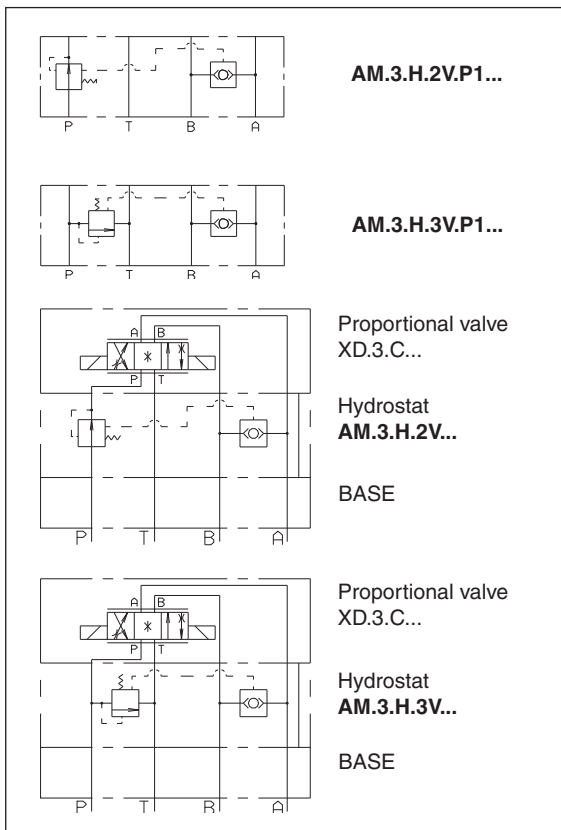
Max. flow	25 l/min
Max. operating pressure	350 bar
Δp adjustment	4 bar 8 bar
Fluid viscosity	$10 \div 500 \text{ mm}^2/\text{s}$
Fluid temperature	$-25^\circ\text{C} \div 75^\circ\text{C}$
Ambient temperature	$-25^\circ\text{C} \div 60^\circ\text{C}$
Max. contamination level	class 8 in accordance with NAS 1638 with filter $\beta_{10} \geq 75$
Weight	1,4 Kg

ORDERING CODE

AM	Modular valve
3	CETOP 3/NG6
H	Hydrostat
**	2V = 2 way 3V = 3 way
P1	Function at port P
**	Differential pressure (Δp) 04 = Δp 4 bar 08 = Δp 8 bar
**	00 = No variant V1 = Viton
1	Serial No.



8



OVERALL DIMENSIONS

