

BS.5.RGA... / BS.5.RIA...

AD.5.I...

CH. I PAGE 42

BS.5.R*A... SPECIAL SUBPLATE MOUNTINGS WITH AUTOMATIC EXCLUSION REGENERATING CIRCUIT



These special subplates, with relief valve, have integrated a regenerative circuit which disengages automatically with increasing load.

This circuit allows a fast movement of the cylinder with low working pressure followed by an automatic disengagement of the regenerative function at the set pressure, consequent a higher hydraulic force is available.

Furthermore in the BS.5.RIA version the automatic reciprocating valve allows a continuous movement of the cylinder till the stop of the pump.

The reciprocating valve has a preferential position which allows the cylinder to begin always in the same position at the start of the working cycle (P → B).

This systems are particularly useful for garbage compactors or small presses.

| | |
|--|---|
| Max. pump flow (suggested) | 30 l/min |
| Max. flow with regenerative connected | 100 l/min |
| Max. operating pressure (relief valve) | 350 bar |
| Max. operating pressure (exclusion) | 200 bar |
| Hydraulic fluids | Mineral oils DIN 51524 |
| Fluid viscosity | 10 ÷ 500 mm ² /s |
| Fluid temperature | -25°C ÷ 75°C |
| Ambient temperature | -25°C ÷ 60°C |
| Max. contamination level | class 10 in accordance with NAS 1638 with filter β ₂₅ ≥ 75 |
| Weight BS.5.RGA... version | Kg 5,7 |
| Weight BS.5.RIA... version | Kg 9,4 |

TYPICAL INSTALLATION VALUES

- Cylinder area ratio (α) **1,6 : 1**
- Pump flow (QP) **30 l/min**
- Type of oil **46 cSt a 40°**
- Regenerative flow (QR) **80 l/min** (for RGA standard subplate)
75 l/min (for RIA standard subplate)
- Min. exclusion pressure setting **70 bar**
- Max exclusion pressure setting **200 bar**
- Exclusion pressure drops **6 bar**

ORDERING CODE

BS

Single subplate mounting

5

CETOP 5/NG10

RGA = Automatic exclusion regenerating circuit with presetting for AD.5.E...

RIA = Automatic exclusion regenerating circuit with AD.5.I.P.2T.1 included

U3

Exclusion range
20 ÷ 200 - see note (*)

Adjustment (relief valve)
M = Plastic knob
C = Grub screw

Max relief setting ranges
2 = max. 140 bar (**yellow spring**)
3 = max. 350 bar (**green spring**)

00 = No variant

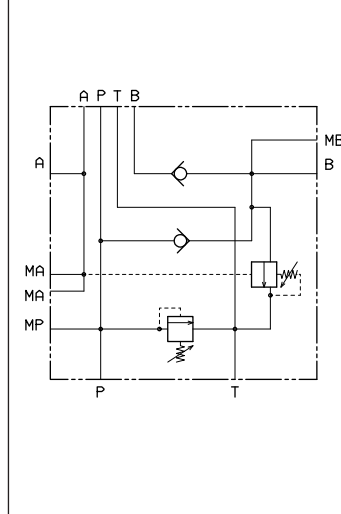
2

Serial No

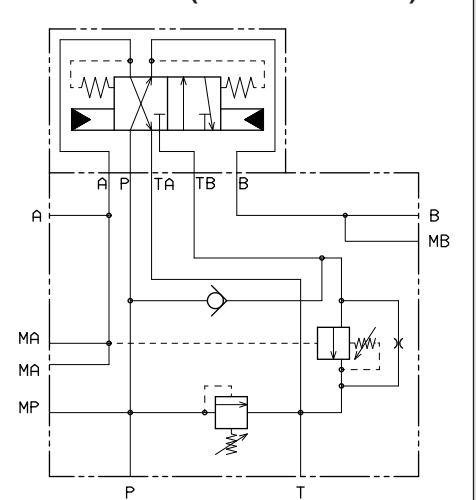
(*) These values depend on the hydraulic circuit configuration: flow, dimensions and system's frictions.

HYDRAULIC SYMBOLS

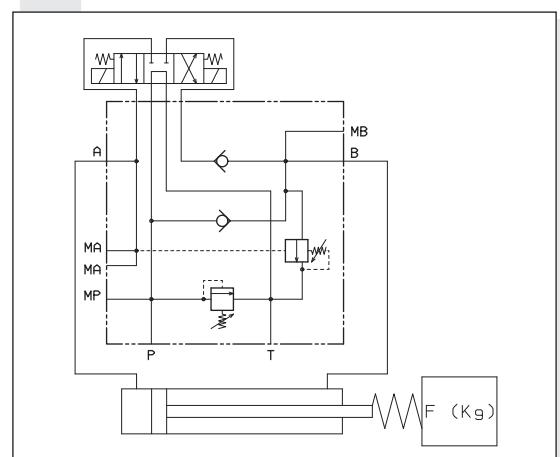
BS.5.RGA



BS.5.RIA... (WITH AD.5.I.P.2T.1)



TYPICAL INSTALLATION FOR BS.5.RGA

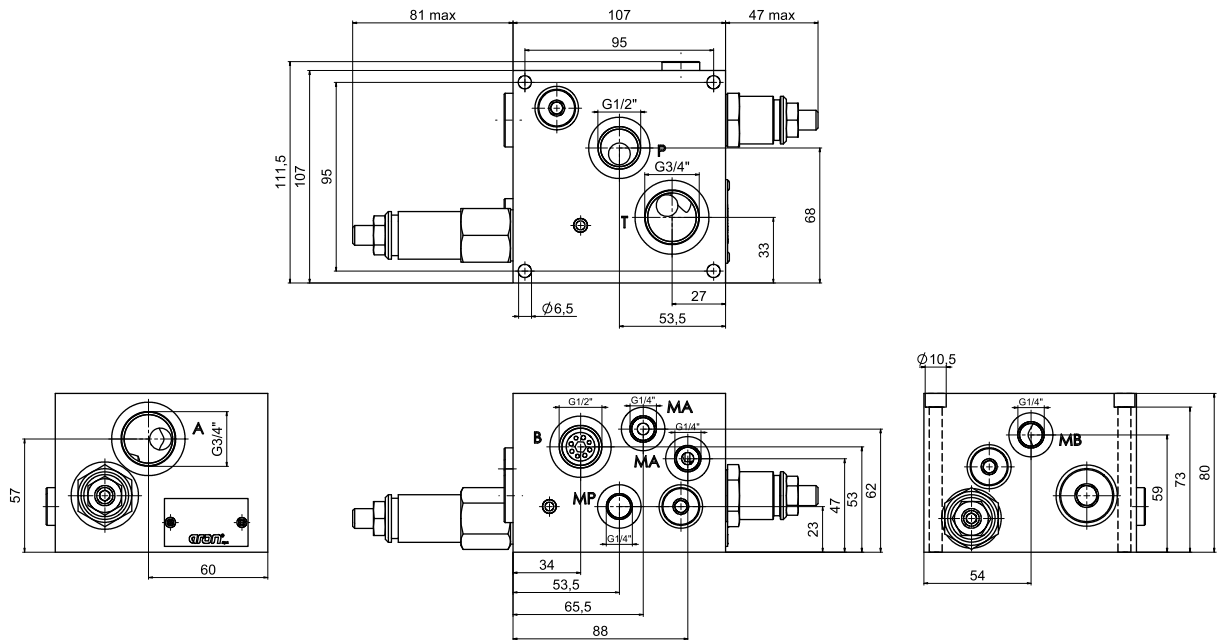


**BS.5.RGA... / BS.5.RIA... SPECIAL SUBPLATE MOUNTINGS WITH
AUTOMATIC EXCLUSION REGENERATING CIRCUIT**

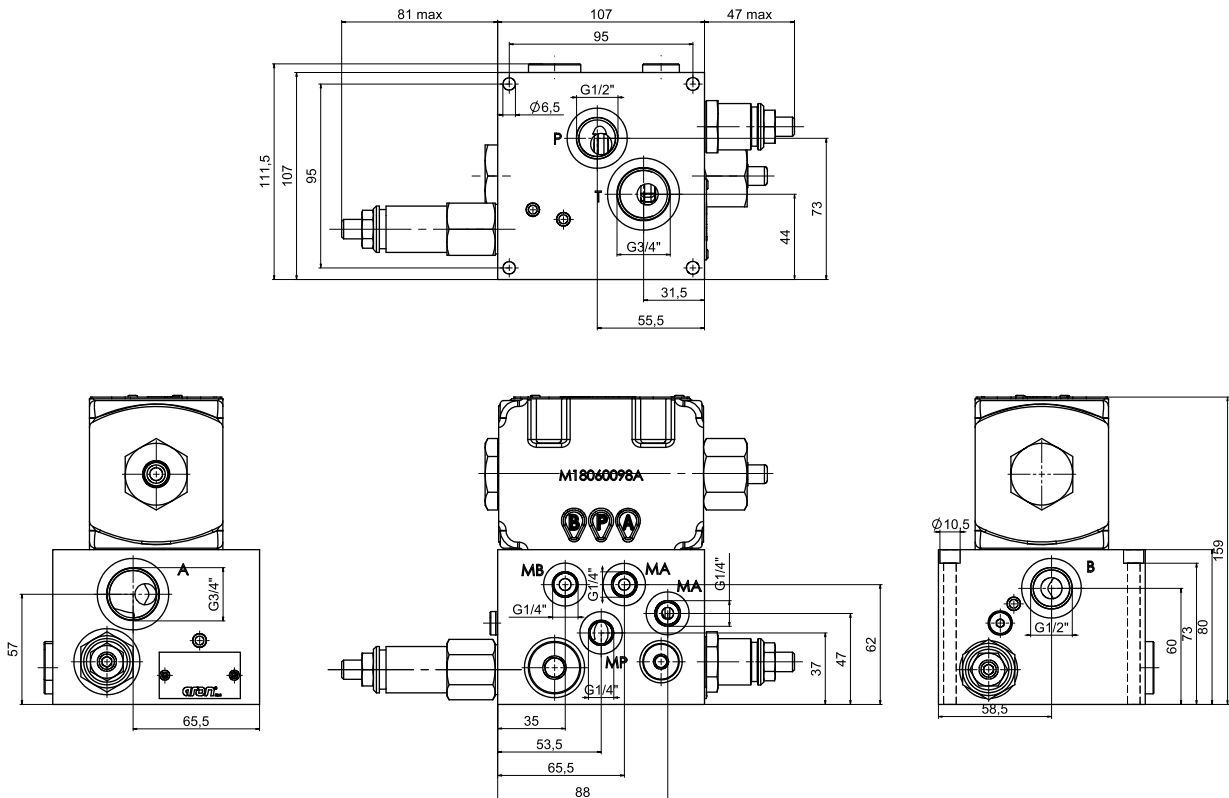


OVERALL DIMENSIONS

BS.5.RGA...



BS.5.RIA... WITH AD.5.I.P.2T.1



10