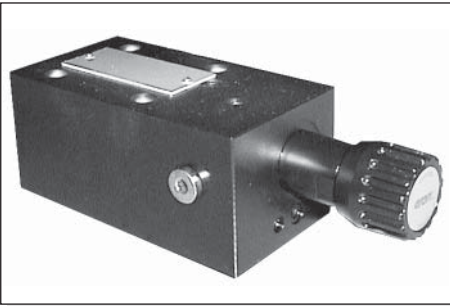


# PV\*.5 / PV\*.U.5 PRESSURE REDUCING AND SEQUENCING VALVES CETOP 5/NG10



PVR.5 / PVS.5...

These subplate mounting piloted type pressure reducing and sequencing valves ensure a minimum variation in their calibrated pressure value with changing flow rate.

They are normally supplied with internal piloting and internal drainage on B, but they are already provided with a hole on the front cover to allow for external drainage.

They are available with two different types of adjustment and three calibrated ranges that cover pressure 7 ÷ 250 bar, with and without check valve.

The adjustment is carried out by means of a grub screw or a metric plastic knob.

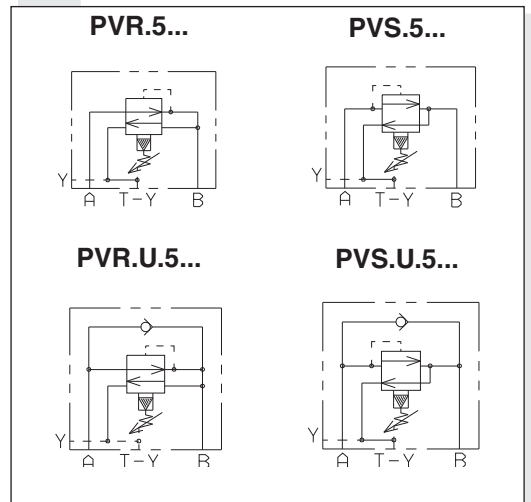
Max. pressure	320 bar	
Setting ranges	Spring 1	max. 60 bar
	Spring 2	max. 120 bar
	Spring 3	max. 250 bar
Maximum allowed $\Delta p$ pressure between the inlet and outlet pressure (PVR only) 150 bar		
Max. flow	90 l/min	
Draining on port T	0.5 ÷ 0.7 l/min	
Hydraulic fluids	Mineral oils DIN 51524	
Fluid viscosity	10 ÷ 500 mm <sup>2</sup> /s	
Fluid temperature	-25°C ÷ 75°C	
Ambient temperature	-25°C ÷ 60°C	
Max. contamination level	class 10 in accordance with NAS 1638 with filter $\beta_{25} \geq 75$	
Weight (without check valve)	3,8 Kg	
Weight (reducing valve with check valve)	4,2 Kg	
Weight (sequencing valve with check valve)	4,5 Kg	

2

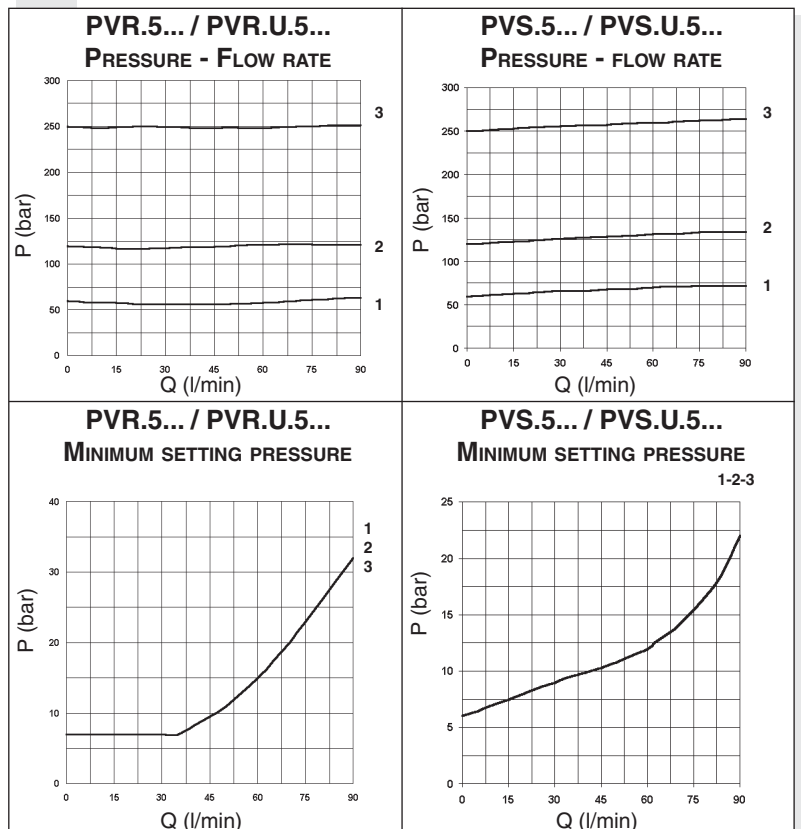
## ORDERING CODE

<b>PV*</b>	<b>R</b> = Reducing valve <b>S</b> = Sequencing valve
<b>U</b>	Check valve (omit if not required)
<b>5</b>	CETOP 5/NG10
<b>*</b>	Type of adjustment: <b>M</b> = Plastic knob <b>C</b> = Grub screw
<b>*</b>	Setting ranges <b>1</b> = max. 60 bar ( <b>white spring</b> ) <b>2</b> = max. 120 bar ( <b>yellow spring</b> ) <b>3</b> = max. 250 bar ( <b>green spring</b> )
<b>**</b>	<b>00</b> = No variant <b>V1</b> = Viton
<b>1</b>	Serial No.

## HYDRAULIC SYMBOLS



## DIAGRAMS

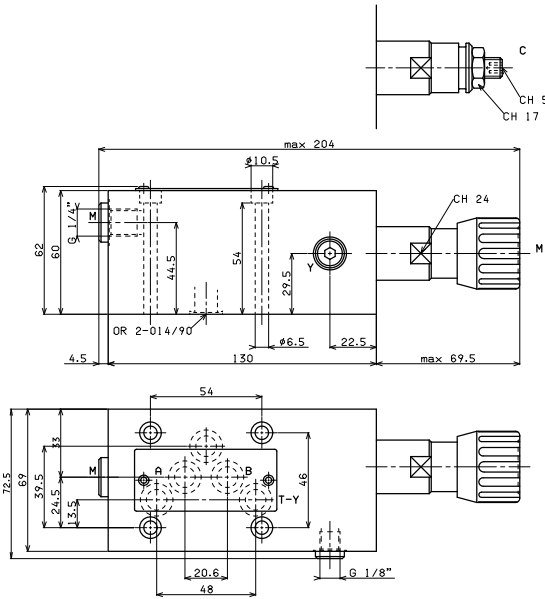


Curves n° 1 - 2 - 3 = setting ranges

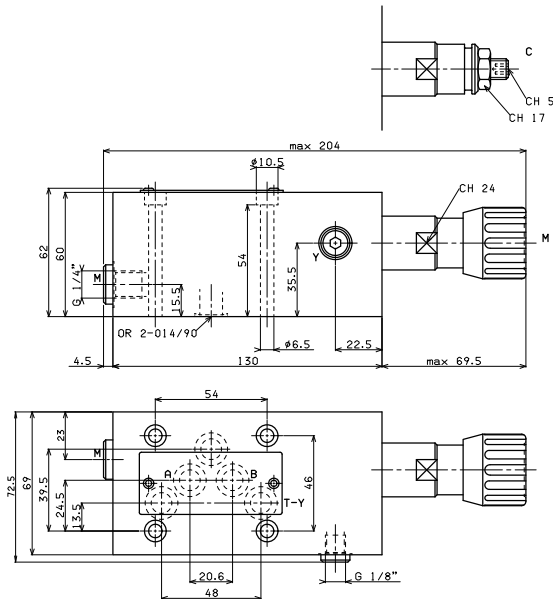
The fluid used is a mineral oil with viscosity of 46 mm<sup>2</sup>/s at 40°C. The tests were carried out at a fluid temperature of 50°C.

OVERALL DIMENSIONS

**REDUCING VALVE  
PVR.5... CETOP 5/NG10**



**SEQUENCING VALVE  
PVS.5... CETOP 5/NG10**



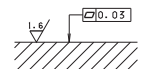
Type of adjustment

M Plastic knob

C Grub screw

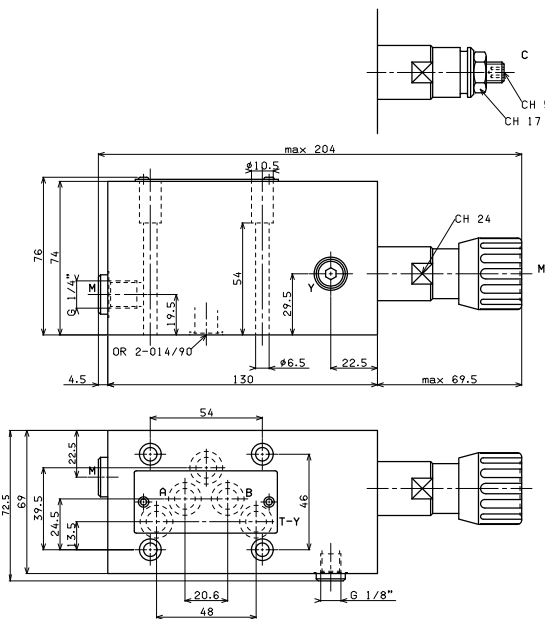
Fixing screws UNI 5931 M6x65  
with material specifications min. 8.8  
Tightening torque 8 Nm / 0.8 Kgm

Support plane  
specifications

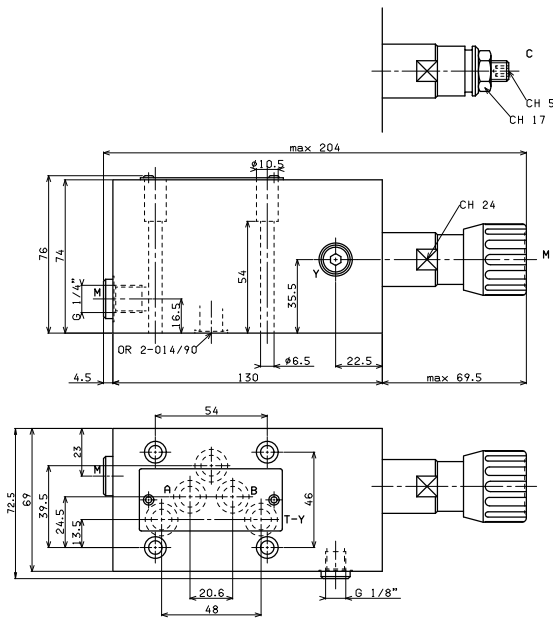


OVERALL DIMENSIONS

**REDUCING VALVE WITH CHECK VALVE  
PVR.U.5... CETOP 5/NG10**



**SEQUENCING VALVE WITH CHECK VALVE  
PVS.U.5... CETOP 5/NG10**



Type of adjustment

M Plastic knob

C Grub screw

Fixing screws UNI 5931 M6x65  
with material specifications min. 8.8  
Tightening torque 8 Nm / 0.8 Kgm

Support plane  
specifications

